

We help our clients make  
**better decision in real estate.**



**COMMERCIAL SUITE FOR SALE OR LEASE  
LOCATED 5 MINUTES FROM POTOMAC HOSPITAL**

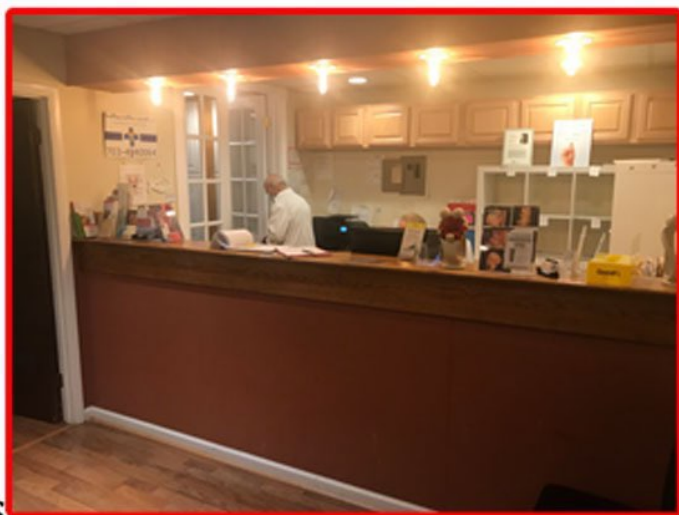
**14904 JEFFERSON DAVIS HWY #407  
WOODBIDGE, VA 22191**



**APPROX.**

**1000 SQ FT**

**Reduced Rate:**  
FOR SALE: \$150,000  
FOR LEASE: \$1,350



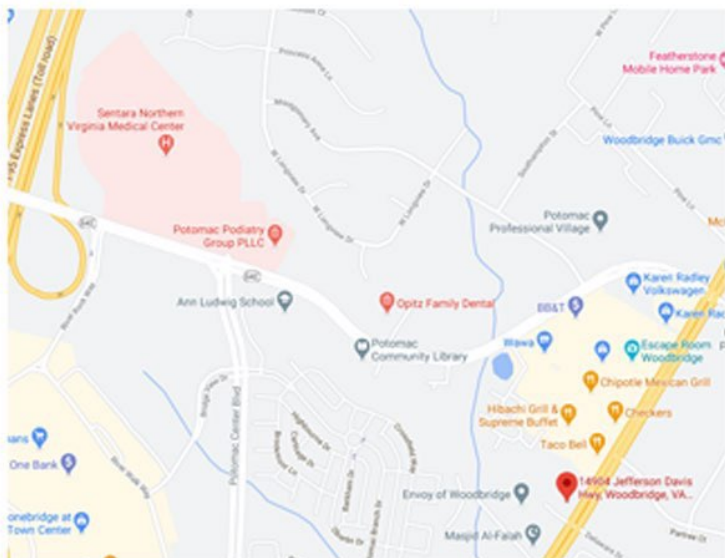
- \* LOCATED TWO BLOCKS FROM SENTARA NORTHERN VIRGINIA MEDICAL CENTER
- \* RECEPTIONIST AREA
- \* 3 SEPARATE EXAM AREAS, LAB, PRIVATE RESTROOMS & 2 DOCTOR OFFICES
- \* PERFECT FOR DOCTORS, ATTORNEYS & OTHER PROFESSIONALS
- \* LOW CAM (CONDO FEE)
- \* ON SITE PHARMACY
- \* MULTIPLE BUILT IN SHELVING/FILLING UNITS
- \* SELLER FINANCING AVAILABLE

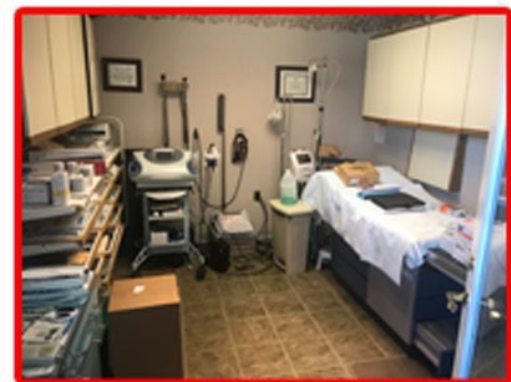
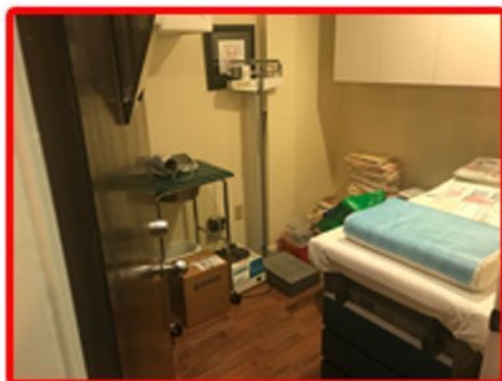
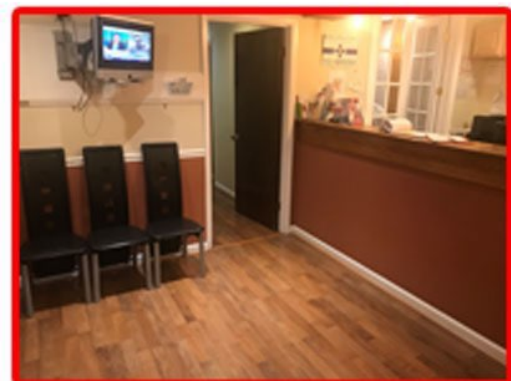
**Northern  
Virginia**  
COMMERCIAL, INC.

**FOR MORE INFO  
PLEASE CONTACT:**

**REZA ROFOUGARAN  
PRINCIPAL BROKER  
NORTHERN VA COMMERCIAL  
703-734-0400  
REZA@VMDCREALTY.COM**

**MATT ROFOUGARAN  
REAL ESTATE SALES PERSON  
703-856-5613  
MATT@VMDCREALTY.COM**





**GREAT OFFICE SPACE AVAILABLE IMMEDIATELY TO SATISFY ANY OF YOUR PROFESSIONAL NEEDS INCLUDING BUT NOT LIMITED TO DOCTORS OFFICE, DENTIST OFFICE, CHIROPRACTIC OFFICE, LAWYERS OFFICE, INSURANCE AGENCY AND MORE! EASY ACCESS TO I-95, ROUTE 1 THIS IDEAL OFFICE SPACE IS LOCATED NEAR POTOMAC HOSPITAL AND POTOMAC MILLS. THIS SUITE FEATURES ONE PRIVATE BATHROOM, RECEPTIONIST AREA, 3 SEPERATE EXAM AREAS, LAB, 2 DOCTOR OFFICES! LOTS OF PARKING SPACES, ELEVATOR & HANDICAP FRIENDLY BUILDING. \$400 A MONTH CONDO FEE COVERS CENTRAL COOLING, WATER, TRASH, BUILDING MAINTENANCE & MORE. SELLER FINANCING AVAILABLE.**

